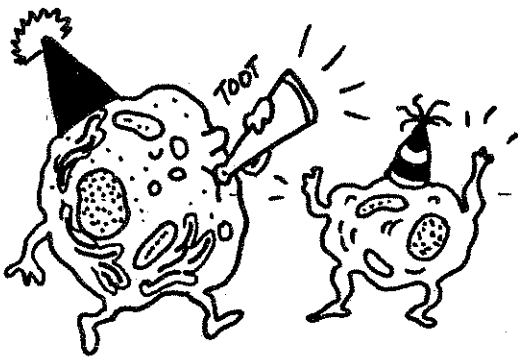


# A CELL-A-BRATION

If you know all the parts of a cell, you can celebrate along with these partying cells. Show what you know by doing the following:

- I. Label each cell part on the next page (page 13) with its correct name.  
(See names on List 1 below.)
- II. Label each cell correctly as **animal cell** or **plant cell**.
- III. Match each cell part (below) with its function on List 2. Write the letter of the cell part in front of the number of the matching descriptive phrase.



## List 1

- A endoplasmic reticulum (ER)
- B nucleus
- C nuclear membrane
- D ribosomes
- E cytoplasm
- F chromosomes
- G cell membrane
- H mitochondria
- I Golgi bodies
- J vacuole
- K chloroplast
- L cell wall

## List 2

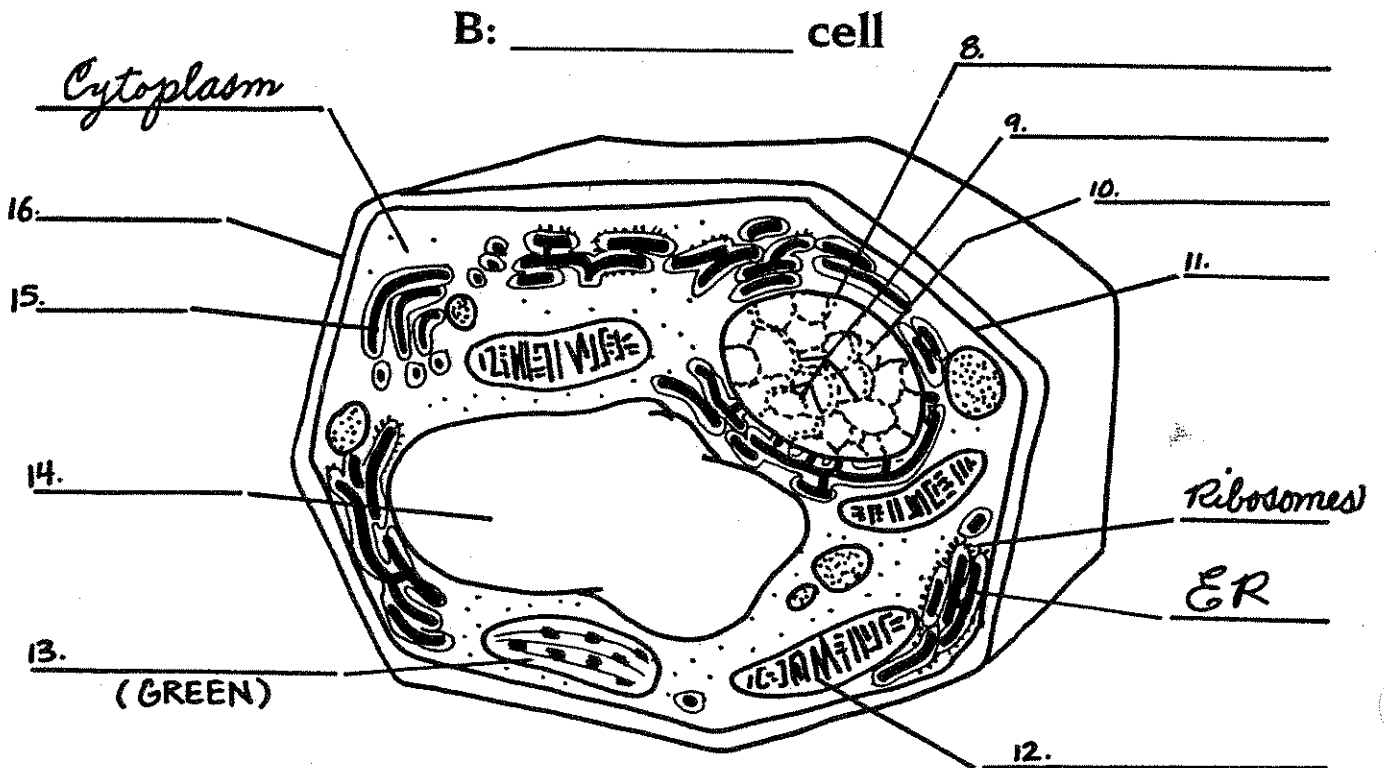
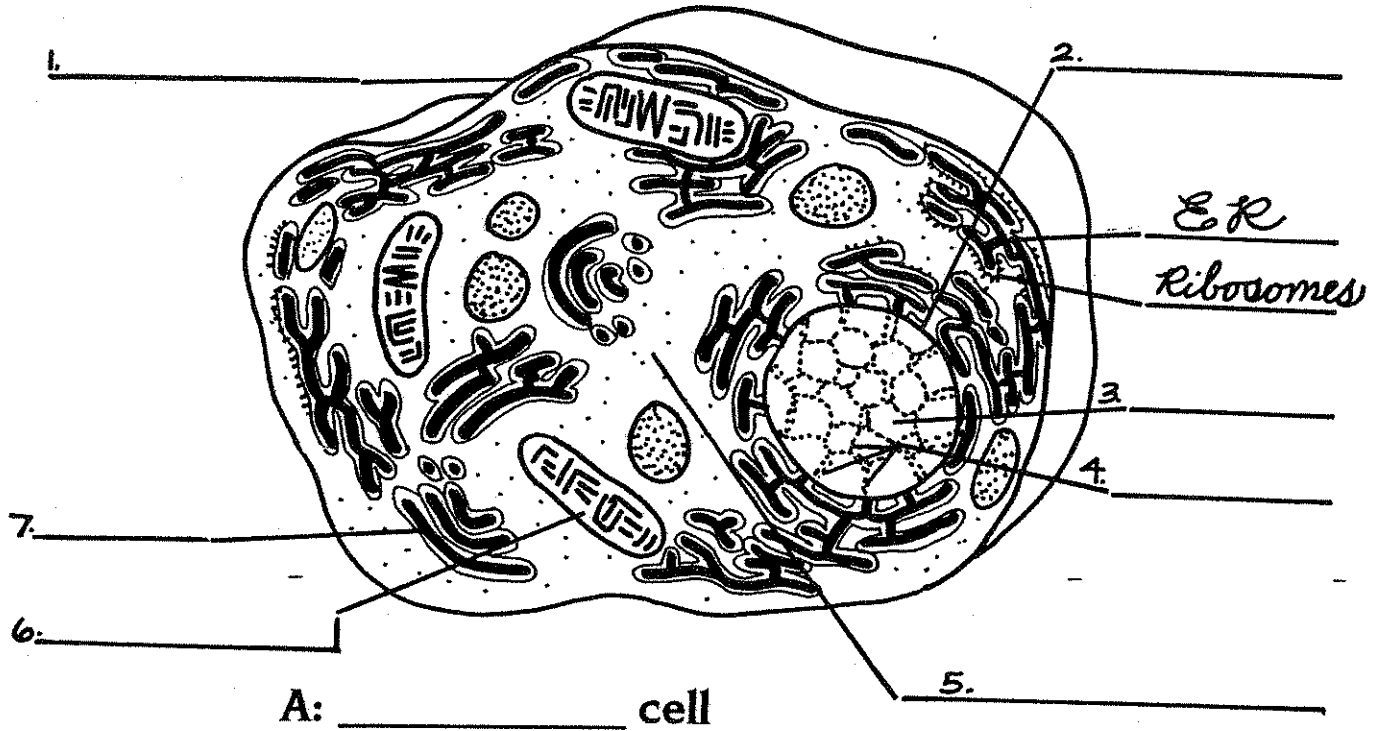
- \_\_\_\_\_ 1. controls chlorophyll to help cell trap light to make food
- \_\_\_\_\_ 2. tube network in cytoplasm where cell substances are made
- \_\_\_\_\_ 3. controls movement of materials in and out of the nucleus
- \_\_\_\_\_ 4. controls cell activities
- \_\_\_\_\_ 5. contains cell materials
- \_\_\_\_\_ 6. surrounds plant cell; gives shape and support to the cell
- \_\_\_\_\_ 7. proteins are made in these
- \_\_\_\_\_ 8. rod-shaped bodies that release energy for cell use
- \_\_\_\_\_ 9. bodies that store and release chemicals for cell use
- \_\_\_\_\_ 10. controls movement of materials in and out of the cell
- \_\_\_\_\_ 11. holds the code that controls cell
- \_\_\_\_\_ 12. stores water and dissolved materials in plant cells

Use with page 13.

Name \_\_\_\_\_

# CELL DIAGRAMS

Use with page 12.



Name \_\_\_\_\_